



Department of Education
Region III
DIVISION OF ANGELES CITY
Jesus Street, Pulungbulu, Angeles City

Tel. No. (045) 322-5722; 322-4702/Fax Nos. (045) 887-6099
email address: angeles.city@deped.gov.ph



RELEASED

NOV 03 2017

By DepED Angeles City
Division Office of City Schools

November 2, 2017

DIVISION MEMORANDUM

No. 427, s. 2017

**THE LEE KUAN YEW SCHOOL OF PUBLIC POLICY – CALL FOR NOMINATIONS
FOR MASTER DEGREE PROGRAMMES AND SCHOLARSHIPS**

To: Heads of Public Elementary and Secondary Schools

1. Please be informed that the Lee Kuan Yew (LKY) School of Public Policy of the National University of Singapore invites applicants to enroll in the Master degree programmes offered for Academic Year 2018.
2. Attached is a copy of DM-CI-2017-00342 for the details of the programmes. Interested applicants may visit their website at www.lkyspp.nus.edu.sg/admissions for clarifications.
3. Wide dissemination of this Memorandum is desired.


LEILANI S. CUNANAN, CESO VI
Officer-in-Charge

Office of the Schools Division Superintendent



Undersecretary for Curriculum and Instruction

MEMORANDUM
DM-CI-2017-00 312

TO : Regional Directors
Schools Division Superintendents
Heads of Public Elementary and Secondary Schools

FROM : *Lorna A. A.*
LORNA DIG DINO, Ph.D.
Director IV
OIC, Office of the Undersecretary for
Curriculum and Instruction

SUBJECT : THE LEE KUAN YEW SCHOOL OF PUBLIC POLICY -CALL FOR
NOMINATIONS FOR MASTER DEGREE PROGRAMMES AND
SCHOLARSHIPS

DATE : 6 October 2017

The Lee Kuan Yew (LKY) School of Public Policy of the National University of Singapore with the school's mission of educating and inspiring current and future generations of leaders, raising the standards of governance in Asia, transforming lives, and creating a more sustainable world invites applicants to enroll in the following Master degree programmes.

These Master Programmes and descriptions are conducted in English and to be offered in Academic year 2018:

- **Two-year Master in International Affairs (MIA):** Suitable for professionals with a keen interest in Asian and global affairs and with a strong passion to contribute to the positive transformation that are taking place in Asia and the world;
- **Two-year Master in Public Policy (MPP):** Suitable for early-career professionals with at least two years of relevant work experience, with an aim to gain a strong foundation in policy analysis, programme evaluation and management;
- **One-year Master in Public Administration (MPA):** Suitable for mid-managerial professionals with at least five years or relevant work experience, who aspire to make a transition to senior management and leadership roles through an intensive and interdisciplinary training in decision making and problem solving; and
- **One-year Master in Public Management (MPM):** Suitable for senior public officials with over ten years of work experience and a proven track record of leadership and high-level decision-making in their careers, looking for intellectual rejuvenation to become more effective leaders by focusing on the challenges of effective leadership and good governance.

Further clarifications and information on these courses are found in their website at www.lkyspp.nus.edu.sg/admissions. Places in the programmes and scholarships are offered on a competitive basis. The deadline for application for Master degree programmes conducted in English is 31 December 2017 for the academic year commencing August 2018.

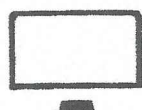
The list of nominees for the Master degree programmes in English can be forwarded to Mr. Louis Low at louis.low@nus.edu.sg.

Immediate dissemination of and appropriate action for this memorandum is desired.

APPLICATION DOCUMENTS GUIDE

(FOR APPLICATION TO MPP, MPA AND MPM PROGRAMMES)

Application period: 1 August to 31 December



Online Application

- Create an online application account at <http://lkyspp.sg/gda2-2018>
- Refer to the step-by-step guidelines to guide your application at <http://lkyspp.sg/howtoapply2018>



Curriculum Vitae

- Job history in reverse chronological order (latest to earliest).
- List down (in bullet points) key responsibilities at each job/role.
- Highlight key achievements at each job/role.
- Indicate academic records (Bachelor, Master, Diploma, etc).
- List down awards/scholarships received (if any).
- Capture the essence of leadership and passion for public service.



TOEFL/IELTS Score

(Not required, if bachelor degree was conducted in English)

- If bachelor degree was not conducted in English, register at your nearest TOEFL or IELTS test centre.
- Take the test (keeping a min. of three months' preparation time ahead of the test date).
- TOEFL iBT score report is available online 10 days after the test date. Hard copy score report arrives in 4 to 6 weeks after the test date.
- IELTS score report is available online 13 days after the test date.
- A score of 100 (TOEFL internet-based test), 600 (TOEFL paper-based test) or 7.0 (IELTS academic test), is preferred.



Official Academic Transcripts and Certificates

- All degree years' transcripts/marksheets and degree scroll.
- The degree documents must be translated into English and notarised, if the original documents were in other languages.



Two Essays

- Answer the two essay questions for the programme you are applying to. Refer to essay questions at <http://lkyspp.nus.edu.sg/admissions/how-to-apply/application-documents-required/>
- Build your central argument focussing on the essay question, giving appropriate examples to substantiate your statements.
- Be succinct and adhere to the prescribed word limit.



Two Reports of Reference

- Give details of two referees who can attest to your professional and academic capabilities, leadership potential, as well as team and work ethics.
- Preferably, the referees should know the applicant for more than a year, and can recommend the applicant for the programme.
- For MPP, an academic and a professional referee is preferred.
- For MPA and MPM, two professional referees are required.
- Referees are advised to submit their reference report via the online application system, as per the template prescribed by the school.



Career Trajectory & Organisation Chart

(For MPM applicants only)

- Describe current position and key responsibilities, size of team managed, and the relevance of your unit within the organisation.
- Illustrate and clearly point out your current position within the organisation chart, including two levels above and two levels below your current position.



Lee Kuan Yew
School of Public Policy



469C Bukit Timah Road, Oei Tiong Ham Building, Singapore 259772
Website: lkyspp.nus.edu.sg

To visit our Admissions website, please scan the QR code below:



Graduate Programmes



Lee Kuan Yew
School of Public Administration



MASTER DEGREE PROGRAMMES

AT-A-GLANCE

Programme	Master in Public Policy (MPP)	Master in Public Administration (MPA)
Duration	Two years (full-time)	One year (full-time)
Language of instruction	English	English
Approx. cohort size	60-80 students	40-60 students
Admissions criteria	<ul style="list-style-type: none"> Two to five years' working experience Demonstrate maturity and commitment towards public service Proficiency in written and spoken English 	<ul style="list-style-type: none"> Mid-level professionals with at least five years' working experience Aspire to take on senior management roles or make a career change Demonstrate maturity and commitment towards public service Proficiency in written and spoken English
Curriculum focus	Rigorous training for a strong foundation in economics, political science, policy analysis, to enable production of research and analysis of findings for effective programme evaluation and management.	Intensive and interdisciplinary training in decision-making and problem-solving; planning of detailed policy responses to complex issues that shape national, regional and global policies and projects.
Core modules	<ul style="list-style-type: none"> The LKY School Course Policy Challenges Policy Process and Institutions Economic Foundations for Public Policy Policy Analysis Exercise (PAE) Public Administration and Politics Quantitative Research Methods for Public Policy 1 Quantitative Research Methods for Public Policy 2 Qualitative Research Methods for Public Policy 	<ul style="list-style-type: none"> The LKY School Course Economic Analysis Policy Analysis Public Management Governance Study Project (GSP)
Specialisations/ Electives ¹	Students may specialise in: <ul style="list-style-type: none"> Economics and Development Politics and International Affairs Management and Leadership 	Students must take two modules from Public Management and Leadership specialisation areas. Students can further select any four elective modules, and register for a maximum of two elective modules in other postgraduate programmes.
International component and double degrees	<ul style="list-style-type: none"> Exchange programmes Internship opportunities Double degrees with overseas partners Double degrees at National University of Singapore (NUS) 	<ul style="list-style-type: none"> Governance study trip Double degrees at National University of Singapore (NUS)
Admissions documents ²	<ul style="list-style-type: none"> Online application form Official academic transcripts and certificates Curriculum vitae or resume TOEFL/IELTS test score GRE/GMAT test score (optional) Two essays Two reports of reference 	<ul style="list-style-type: none"> Online application form Official academic transcripts and certificates Curriculum vitae or resume TOEFL/IELTS test score GRE/GMAT test score (optional) Two essays Two reports of reference
Application deadlines	Applications open on 1 August and close on 31 December every year. For more information, contact us at +65 6516 8004 or visit our admissions webpage at lkyspp.nus.edu.sg/admissions/ .	

TUITION AND FINANCIAL AID

17

Fees and Costs¹

	Master in Public Policy (MPP)	Master in Public Administration (MPA)	Master in Public Management (MPM)	Master in International Affairs (MIA)
Tuition fees (Singaporeans & PRs) ²	S\$31,300	S\$17,606.25	S\$53,650	S\$62,060
Tuition fees (International students) ³	S\$46,900	S\$26,381.25	S\$61,450	
Tuition fees without subsidy ⁴	S\$88,320	S\$49,680	S\$82,160	
Other fees (Estimated) ⁵	S\$4,000	S\$4,000	S\$7,000	S\$4,000
Costs at partner university ⁶	N/A	N/A	S\$32,350	N/A
Living costs ⁷	S\$2,020-S\$2,725 per month			
Student service fee	S\$159.25 per semester			
Health service fee	S\$67.95 per semester			

1. Fees are correct at time of printing and are subject to change.
2. Fee amounts quoted here for Singapore Citizens and Permanent Residents are exclusive of prevailing taxes. The applicable taxes is subsidised by the Ministry of Education (MOE), except for the MIA programme.
3. Fee amounts quoted here for international students are inclusive of prevailing taxes. International students will have to bear the prevailing taxes (currently 7%) levied on the fees payable by them.
4. Students who have previously enjoyed government subsidy or sponsorship by a Singapore government agency (such as scholarships offered by the Ministries, Public Service Commission and Statutory Boards) in a graduate programme will not be eligible for MOE subsidy in another graduate programme at the same or lower level. Instead, such students will be liable to pay "Non-Subsidised Fees", inclusive of prevailing taxes. For example, students who had previously enjoyed subsidies/scholarship in a master's programme and had attained the master's degree will not be eligible for subsidies in another programme at master's or lower level. For more details, visit <http://www.nus.edu.sg/registrar/education-at-nus/graduate-education/fees.html>.
5. Includes payment for student development programmes, the orientation programme, student pass/visa fees and the programme closure event. These costs vary from year to year.
6. Includes accommodation, curriculum materials and activities and local expenses.
7. Costs are estimated; visit our website for a breakdown of costs.

Scholarships

We offer a number of merit-based scholarships for the MPP, MPA and MIA programmes. Applicants must demonstrate good academic and professional records, leadership qualities and a strong desire to contribute to public service.

LKY Fellowships

The LKY Fellowships are given on a merit basis to outstanding MPM candidates who have demonstrated academic and professional distinction, exceptional leadership qualities and a firm commitment to public service. Awarded in partnership with the Ministry of Foreign Affairs of Singapore, the Fellowship is valued in excess of S\$130,000 and covers the entirety of the candidate's education in the MPM programme.

Scholars and fellows should not concurrently hold any other scholarship, fellowship or award without the school's prior approval.

¹ All information stated in the brochure is correct at time of publication (July 2017) and subject to change without notice.

gei

iluo

up
ai

iluo

Nelson Mandela

MLPE

Module 1: Introduction to the MLPE

Mariyam Raza Haider,
India



Lee Kuan Yew
School of Public Policy

